

BITUMEN SPRAYER



VARIANTS: 4 Tons, 6 Tons, 8 Tons, 10 Tons, 12 Tons
Capacities above 12 Tons are tailor made.



ATLAS INDUSTRIES

ATLAS is one of INDIA'S leading manufacturers of road and civil construction machinery. We specialize in delivering professional-grade solutions for customers.

ATLAS INDUSTRIES is an ISO 9001 : 2008 company engaged in design, development, manufacturing, marketing and servicing a complete line of Asphalt Drum Mix Plants, Wet Mix Macadam Plants, Concrete Batch Mix Plants, Bitumen Pressure Distributors and Mechanical Brooms.

WHEN YOU WORK WITH US, YOU CAN EXPECT:

PROFESSIONALISM: We're dedicated to providing exceptional service to our clients by being responsive, effective, and reliable.

PERSISTENCE: We do things the right way, even when it's the hard way. We'll always seek to do what's best for you and your company.

PRECISION: We're proud of every job we do.

EXPERIENCE: With 30+ years of experience in manufacturing road construction equipments we know exactly what we're doing.

QUALITY: The best quality products in the business.



BITUMEN TANK

Tank is fabricated by a 5 mm MS sheet and is coated by 50 mm glass wool to prevent heat loss. The outer covering is galvanized as it has long life due to its anti-corrosion properties.

Manhole for maintenance or to fill the bitumen tank is of 450 mm diameter. Manual and electronic temperature gauge is provided for temperature display up to 300 Degrees Celsius. Electronic temperature gauge is given at the drivers cabin.

A ladder and platform is provided for ease of access to the top. A cock is given so that full bitumen tank can be drained out when required.



TOP ACCESS LADDER



BITUMEN DRAIN OUT COCK

BURNER

Single high pressure oil burner (Diesel compatible) for adequate heating of viscose binder is provided. Burner does the task of heating bitumen tank. Tank burner of capacity 43000 or 100000 cal is provided, depending on the sprayer capacity. A hand torch type burner of capacity 26000 cal is for manually cleaning the pipelines. This burner will be useful to facilitate quick start up of the sprayer in extreme cold.

There are two fuel storage tanks provided with the sprayer. One is of 100 liters for burner and for engine, fuel storage is of 50 liters.

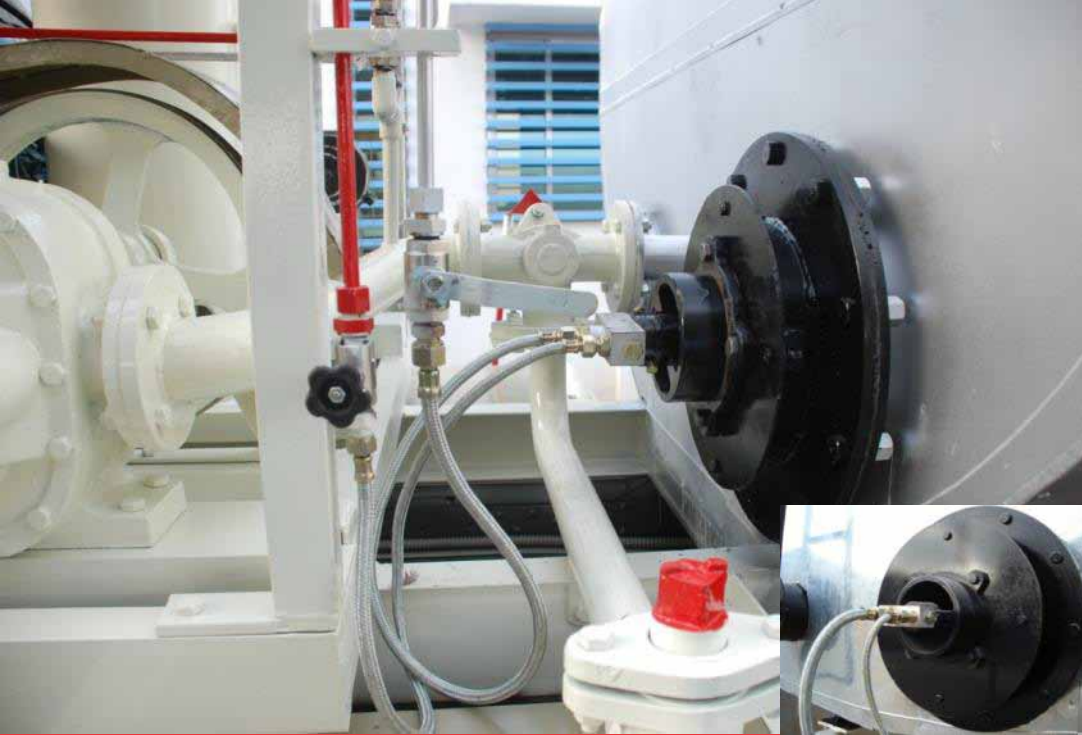
www.atlasindustries.in

ENGINE

Engine: Single stage twin cylinder air cooled diesel engine of 25HP at 2000 RPM "KIRLOSKAR" Engine model HA 294.

Bitumen pump and air compressor are engine driven.

Fuel consumption is 3-4 liters per hour.





BITUMEN PUMP & AIR COMPRESSOR

Bitumen pump and air compressor are engine driven.

Bitumen pump is connected to the engine by a heavy duty clutch. Just engaging the clutch will activate the pump.

Bitumen pump gear type 380 to 450 Liters per minute with relief valve is provided.

Double cylinder 3HP driven by v-belt through engine. Discharge pressure is 150 PSIG, with piston displacement of 11.25 / 8.70-CFM / FAD @1000 RPM



BITUMEN PUMP



AIR COMPRESSOR



RETURN LINE

Return line in spray is designed in such a way that you can set and adjust the spray bar pressure from the gland cock.

The gland cock can be adjusted in a way to fasten the heating process during starting up the machine.

www.atlasindustries.in

BITUMEN TRANSFER LINE

Bitumen can be filled in the bitumen tank through a bitumen transfer line.

Filling of bitumen will be easy and by the same pump which is provided with the sprayer.

No extra pump is required.





SPRAY BAR

Standard spray bar is folding type fitted with pressure gauge regulating valve etc. Standard width of the spray bar is from 2.4 meters to 4.2 meters which can be extended to up to 6.0 meters.

Spray bar does adjustment of width by closing nozzles.

Adjustment of spray bar height is mechanical.

Pre-heating of spray is by full circulation of preheated bitumen.

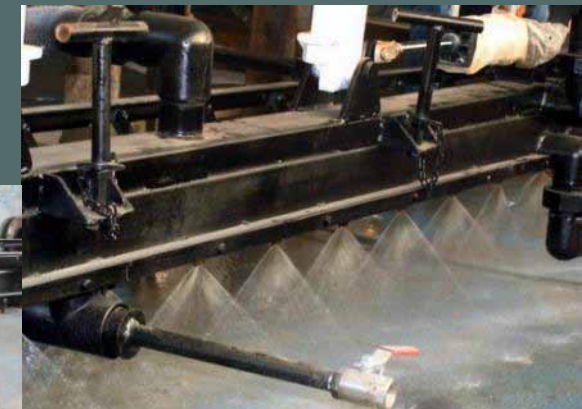
Spraying pressure can be adjusted from 0-6 bar.

One Hand spray pipe SS Corrugated of length 5 meter is provided.

Cleaning is by air pressure and by diesel.

Rate of spray application: 0.3-1.0 kg per sq meters.

Calibration chart is provided at the operator's platform.



SPRAY BAR BEND

SPRAYING



PNEUMATIC SYSTEM

PNEUMATIC SYSTEM

A pneumatic hand lever valve is provided near the operator's seat.

This is important to open and close the spray nozzles.

www.atlasindustries.in

CLEANING SYSTEM

A cleaning system is provided with the sprayer near the bitumen pump.

At the end of day bitumen flow has to be off and entire spray line and spray bar can be cleaned by using air pressure and diesel.



ATLAS INDUSTRIES

Plot No. 14/1, G.I.D.C. II, Dediyaan, Mehsana - 384004, Gujarat, India.

Factory: +91 2762 224065

Fax: +91 2762 224066

For export Inquiries : +91 97238 10565

For domestic Inquiries: +91 98240 40565