

WET MIX PLANT



VARIANTS: WM 100 (100 tph), WM 160 (160 tph), WM 200 (200 tph)

Capacities above 200 tph are tailor made.



ATLAS INDUSTRIES

ATLAS is one of INDIA'S leading manufacturers of road and civil construction machinery. We specialize in delivering professional-grade solutions for customers.

ATLAS INDUSTRIES is an ISO 9001 : 2008 company engaged in design, development, manufacturing, marketing and servicing a complete line of Asphalt Drum Mix Plants, Wet Mix Macadam Plants, Concrete Batch Mix Plants, Bitumen Pressure Distributors and Mechanical Brooms.

WHEN YOU WORK WITH US, YOU CAN EXPECT:

PROFESSIONALISM: We're dedicated to providing exceptional service to our clients by being responsive, effective, and reliable.

PERSISTENCE: We do things the right way, even when it's the hard way. We'll always seek to do what's best for you and your company.

PRECISION: We're proud of every job we do.

EXPERIENCE: With 30+ years of experience in manufacturing road construction equipments we know exactly what we're doing.

QUALITY: The best quality products in the business.



AGGREGATE FEEDER

In our wet mix macadam plants all the four bins are fitted with individual A. C./ D. C. motors and gear box to control and regulate the flow of aggregate from each bin.

Gathering conveyor is equipped with scrapper and driven by A. C. motor. Aggregate from the gathering is fed to the drum with a slinger conveyor after removing oversized materials.

* - Supplied with mobile plants.



INDIVIDUAL FEEDER GATES



VIBRATORY MOTOR



GATHERING & SLINGER



*WIRING TRAY



NO FLOW INDICATOR SWITCH



*JUNCTION BOX



VIBRATING SCREEN

In the wet mix plants, a rugged single deck vibratory screen is placed at the end of cold aggregate feeder. Its job is to remove the oversized materials.

www.atlasindustries.in

SLINGER CONVEYOR

The slinger conveyor belt is an important component in a wet mix plant. Driven by A. C. motor, aggregates are transferred to pug mill mixing unit. It is equipped with weigh bridge (Load Cell) for continuous monitoring of weight (tons/hour)

Its job is to weigh aggregate and transfer it to the pug mill – mixing unit.

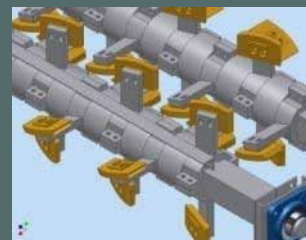




PUG MILL MIXING UNIT

Mounted on a sturdy chassis the dual shaft PUG MILL consists of hardened material liners-heavy duty square bar with wear resistant paddle arms and tips. It is designed to give a homogenous mix.

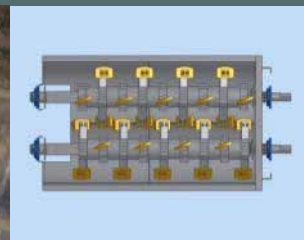
In Pug mill we have 6 pedestals, our shafting is of 5 inches. We don't make slots. We give a distant pieces which increases the life of the Shaft. Our design is that we have two arms opposite to each other similar with tips. Other manufacturers have alternate arms and tips we have double arms and tips.



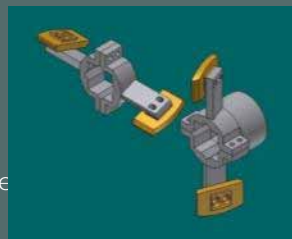
PEDAL AND ARMS



PUG MILL MIXING



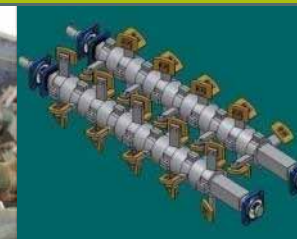
PUG MILL TOP VIEW



FIXABLE PEDAL ARMS



ACTUAL PUG MILL



6 NOS OF PEDESTAL



ARMS AND TIPS



WATER TANK

Water Storage tank is fitted with best quality standard pump and meter with standard pipe to transfer exact quantity of water to the PUG MILL



WATER PUMP



SMALL POND CAN ALSO BE CREATED AS AN OPTION TO WATER TANK



WET MIX PLANT WITH 25 T CAPACITY MIX MATERIAL STORAGE SILO

LOAD OUT CONVEYOR

The aggregate discharged from PUG MILL is collected into an inclined load out conveyor equipped with SILO TYPE hopper or with a SILO. The hydraulically operated cam shell gate provide surge capacity when changing trucks and controls segregation in the mix.



10 T CAPACITY SILO TYPE WET MIX STORAGE HOPPER



2 T CAPACITY STORAGE HOPPER



CONTROL CABIN AND PANEL

Fully computerized cabin with on board electric power console, distribution, switch board, fully automatic processes are a standard on ATLAS WM Series plants. User friendly software ensures top notch performance.

Display of the entire process control parameters.

Provision to store, edit production details, mix proportions, etc is possible.

Panel enables the plant to run in Auto & manual mode.



EASY TO USE PANEL

ATLAS INDUSTRIES

Plot No. 14/1, G.I.D.C. II, Dediyaan, Mehsana - 384004, Gujarat, India.

Factory: +91 2762 224065

Fax: +91 2762 224066

For export Inquiries : +91 97238 10565

For domestic Inquiries: +91 98240 40565