

ASPHALT PLANT



MOBILE PLANT VARIANT: MDM 25 (20-30 tph)



ATLAS INDUSTRIES

ATLAS is one of INDIA'S leading manufacturers of road and civil construction machinery. We specialize in delivering professional-grade solutions for customers.

ATLAS INDUSTRIES is an ISO 9001 : 2008 company engaged in design, development, manufacturing, marketing and servicing a complete line of Asphalt Drum Mix Plants, Wet Mix Macadam Plants, Concrete Batch Mix Plants, Bitumen Pressure Distributors and Mechanical Brooms.

WHEN YOU WORK WITH US, YOU CAN EXPECT:

PROFESSIONALISM: We're dedicated to providing exceptional service to our clients by being responsive, effective, and reliable.

PERSISTENCE: We do things the right way, even when it's the hard way. We'll always seek to do what's best for you and your company.

PRECISION: We're proud of every job we do.

EXPERIENCE: With 30+ years of experience in manufacturing road construction equipments we know exactly what we're doing.

QUALITY: The best quality products in the business.



AGGREGATE FEEDING CONVEYOR

AGGREGATE FEEDER

In our mobile asphalt drum mix plant all the four bins are fitted with individual A. C./ D. C. motors and gear box to control and regulate the flow of aggregate from each bin.

Conveyor is driven by A. C. motor. Aggregate from the gathering is fed to the drum with a single conveyor.

Feeder and dryer chassis comes with attached Diesel/LDO tank.



INDIVIDUAL FEEDER GATES

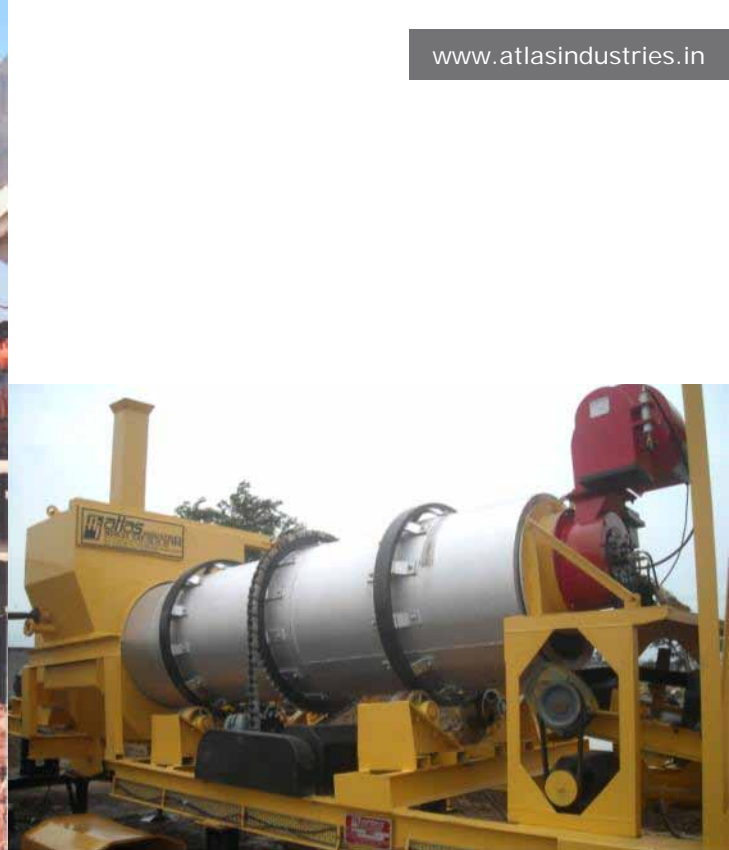
VIBRATORY MOTOR



WIRING TRAY

NO FLOW INDICATOR SWITCH

JUNCTION BOX



DRYING AND MIXING UNIT & BURNER

The dryer assures outstanding efficiency in uniformly heating and drying the aggregates. Rotary cylinder drum is mounted on sturdy platform driven by AC motor with sprocket and chain equipped with high pressure jet burner, flights, bitumen and fines piping, frame mounted exhauster fan with high efficiency dust collector fitted with discharge dust screw conveyor. High pressure jet burner is capable of heating the aggregate to the required temperature without any un burnt fuel or carbon residue on the aggregate and to reduce the moisture content of the aggregate to minimum. The unit is also with suitable type of thermometric instrument fitted at proper places so as to indicate the temperature of exhaust gases, bitumen and mixture.



*INTERNAL CABLING



FLIGHTS



**GLASS WOOL COATING



DRUM SPOKES



THRUST & TRUNION ROLLERS



*JUNCTION BOX



TILTING TYPE LOAD OUT CONVEYOR

LOAD OUT CONVEYOR

The aggregate discharged from the drying drum is collected into a heat resistant belt supported by inclined load out conveyor equipped with GOB hopper with hydraulically operated cam shell gate to provide surge capacity when changing trucks and to control segregation in the hot mix.

Hydraulic Power Pack is for hydraulic opening and closing of the hopper gates. The storage capacity of GOB hopper is 0.5 T.

** - Supplied with export quality plants. Hot mix SILOS and bucket elevator can be supplied.



**FULLY COVERED LOAD OUT CONVEYOR TO REDUCE HEAT LOSS FROM HOT MIX



LIME / ADDITIVE FILLER

For addition of dust or mineral to the mix material in the mixing zone of the drying and mixing unit. It is provided with a rotary valve driven by A. C. /D. C. motor. Filler material is conveyed to the drum through the drum through a pipe by suitable twin lobe compressor. The inlet of mineral is adjacent to the bitumen line in the Drying drum.

Lime filler is fixed with bitumen tank and cabin in a chassis

www.atlasindustries.in

FUEL TANK FOR DRYER BURNER

The dryer burner supplied is FO, Diesel and LDO compatible. There is a standard fuel tank supplied with the plant to store and supply the desired amount of fuel to the dryer burner. This tank also comes with its pumping station.



PUMPING STATION



BITUMEN TANK & CONTROL CABIN

Our storage tanks are mounted on a sturdy FULL chassis. Storage tanks are cylindrical or U shaped. The tank is insulated with glass wool to avoid heat loss and reduce fuel consumption. Automatic pressure Jet oil burner (diesel), bitumen pump with jacketed oil body, bitumen metering system with variable speed motor and hot oil circulation motor is provided.

*** - Optional.



*** PLC TOUCH SCREEN TYPE PANEL

MICROPROCESSOR BASED PANEL BOARD



BITUMEN TANK WITH LIME FILLER AND CABIN

BITUMEN TANK BURNER



POLLUTION CONTROL

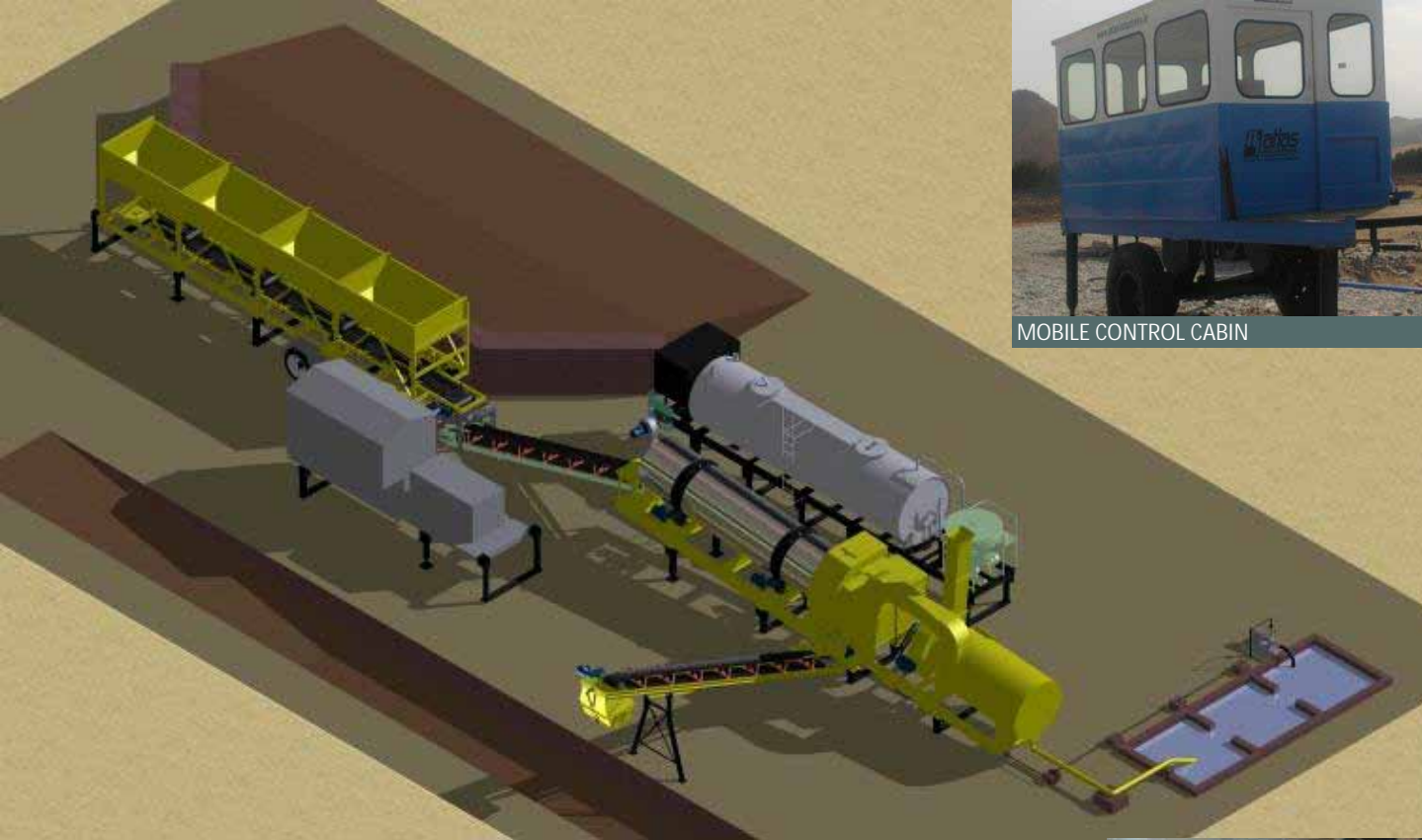
VENTURI TYPE Wet dust collectors are highly efficient and are known to maintain required environmental standards. The extreme turbulence leads to superb entrapping of dust laden exhaust gas.

Large size stainless steel nozzles provide clog free operation to ensure optimum cleaning efficiency.

*** - Optional.



TRANSPORTATION



MOBILE CONTROL CABIN



MOBILE AGGREGATE FEEDER



DRYER WITH WET DUST COLLECTOR

PLANT LAYOUT

A mobile is similar to stationary plant except for its layout.

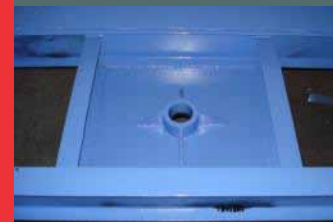
Mobile plant comes with-

- Aggregate feeder on a chassis with an axle
- Dryer drum with pollution control device on a double axle chassis.
- LDO + Bitumen tank + Lime filler on one chassis with single axles.
- Cabin with space for generator is a chassis with single axle.

Built on rugged structure, a mobile plant comes with pneumatic braking system and king pin attachment feature. The plant also comes with internal cabling and junction box on each chassis so that wiring is quick and simple.



AXLE WITH PNEUMATIC BRAKING



KING PIN



MOBILE BITUMEN TANK

ATLAS INDUSTRIES

Plot No. 14/1, G.I.D.C. II, Dediyaan, Mehsana - 384004, Gujarat, India.

Factory: +91 2762 224065

Fax: +91 2762 224066

For export Inquiries : +91 97238 10565

For domestic Inquiries: +91 98240 40565